

# Steps Toward AB1826

Mandatory Organics  
Recycling/Diversion



**Jennifer Halpin,**  
Zone Administrator

# First Steps

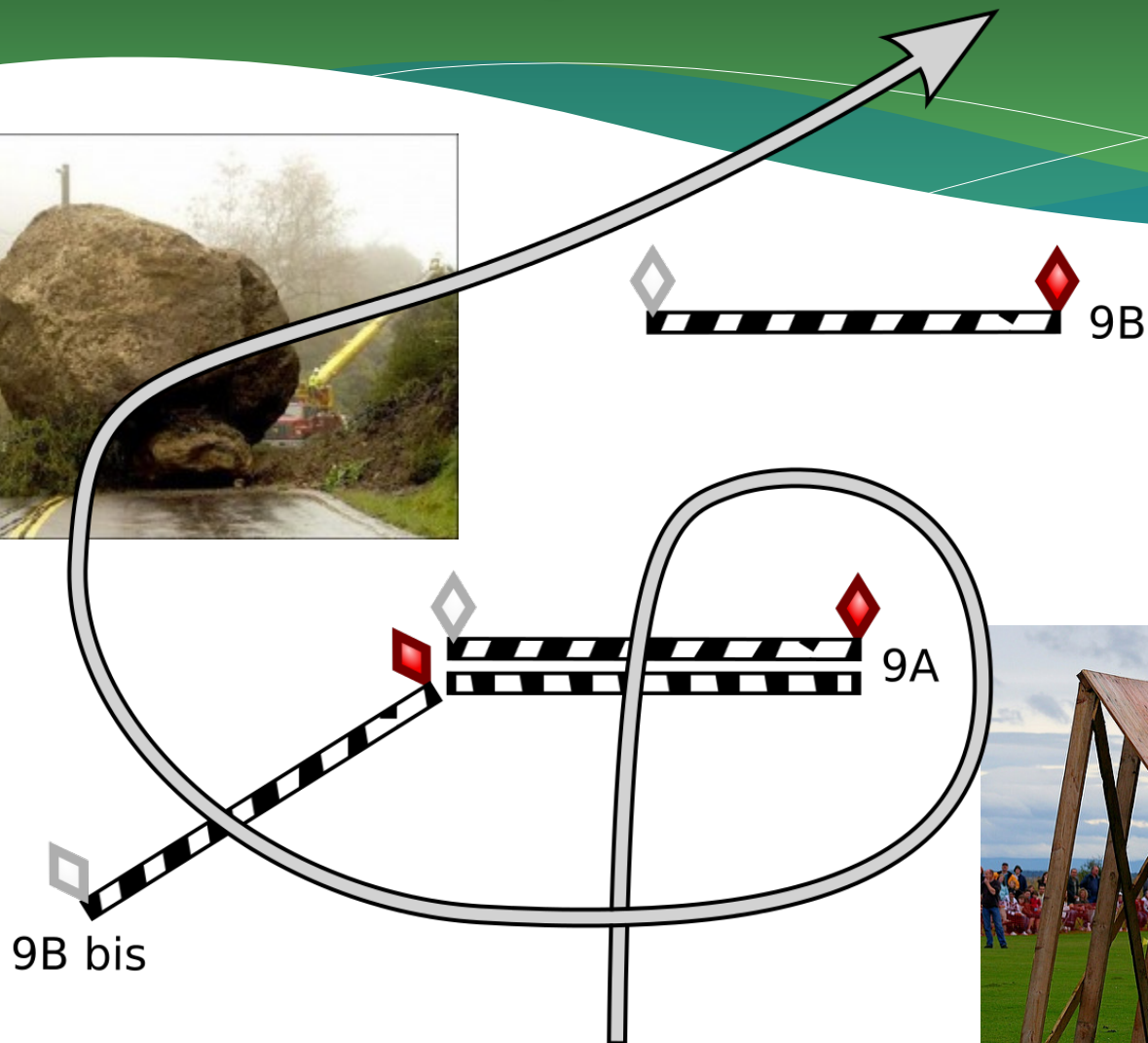
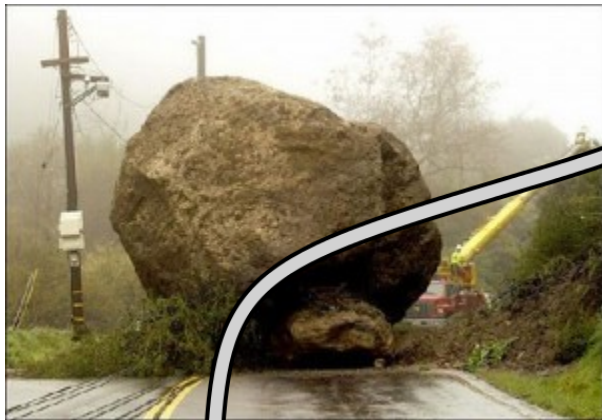
## Information From Haulers



# Next Steps: Challenges/Obstacles

A decorative graphic at the bottom of the slide consists of several overlapping, wavy horizontal bands. From top to bottom, the colors are a light green, a white band, a teal band, a darker green band, and a dark brown band. The waves are smooth and flow from left to right across the width of the slide.

# Challenges/Obstacles



# Obstacle 1: Permitting

## Different Tier

- Landfills permitted to take in green waste (yard waste only).
- No permitted facilities available in surrounding counties.
- Takes a few years + few millions to establish new tier facilities.

# Obstacle 2: Infrastructure

Avenal, CA

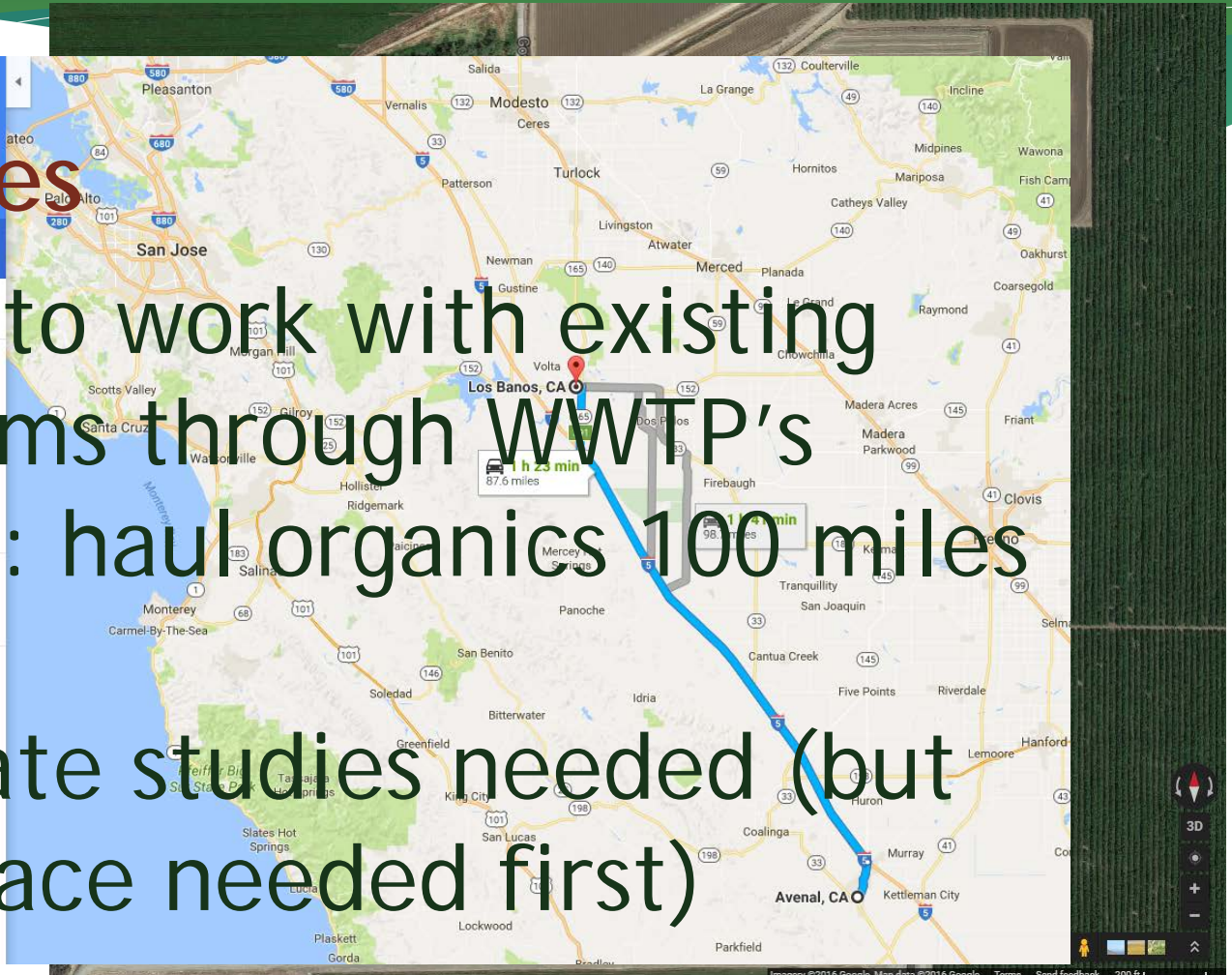
Los Banos, CA

Leave now

OPTIONS

## New Routes

- Trying to work with existing programs through WWTP's
- Hauler: haul organics 100 miles away?
- New rate studies needed (but end-place needed first)



# Obstacle 3: Spacing Issues



RECY.



COMP.



TRASH

# Preventing Waste & Closing the Loop

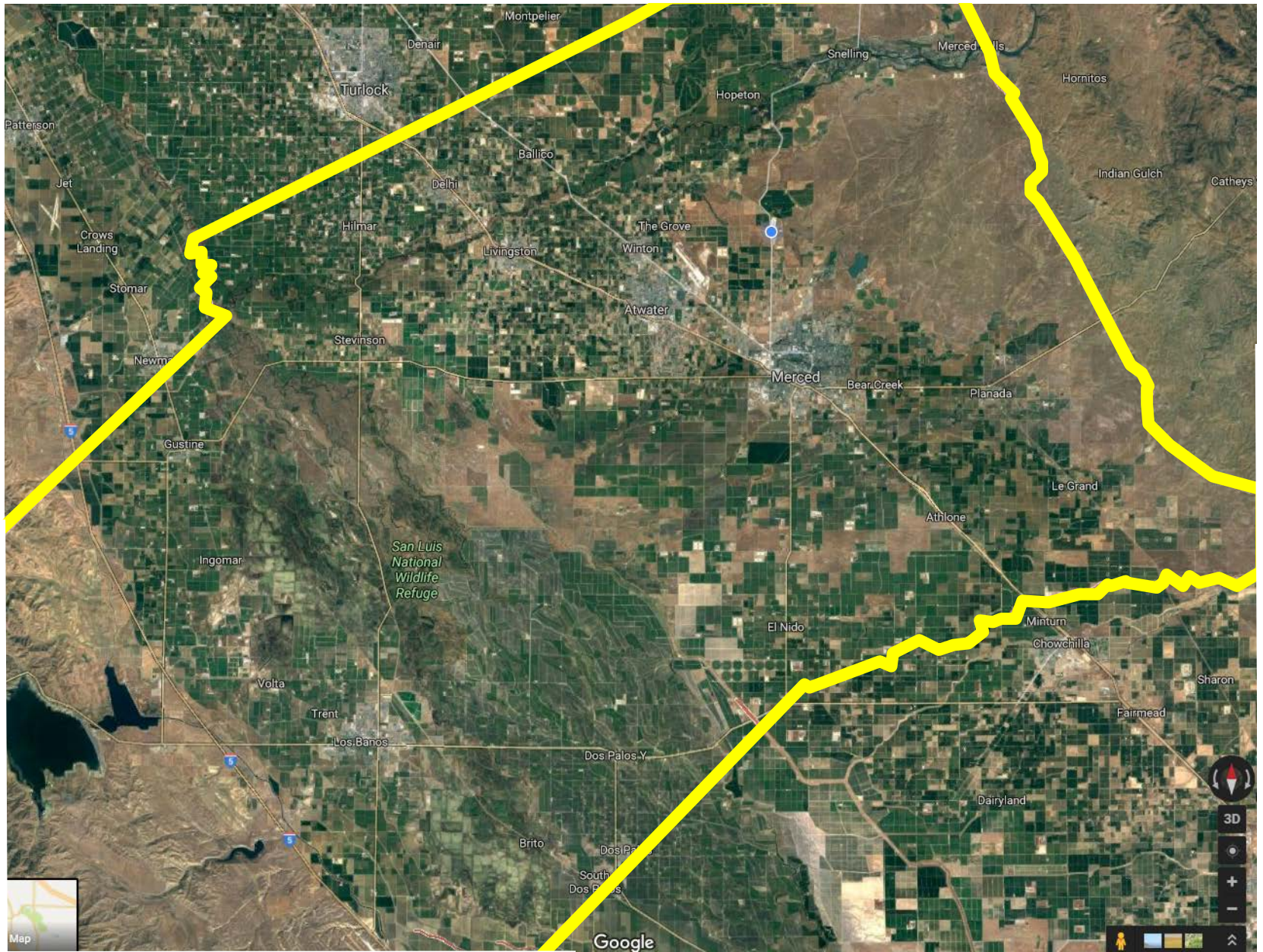
A decorative graphic at the bottom of the slide consists of several overlapping, wavy horizontal bands. From top to bottom, the colors are a light green, a teal, a white, and a dark brown. The bands are layered and overlap, creating a sense of depth and movement.



# Prevent Waste

## Education

- Having efficient food preparation
- Eliminating food trays at buffets
- Donating to shelters and food banks
  - Food bank can now accept produce
  - Merced County has one of the highest homeless/transient population.



Patterson  
Jet  
Crows Landing  
Stomar  
Newman  
Gustine  
Ingomar  
Volta  
Trent  
Los Banos  
Brito  
South  
Dos Palos

Denair  
Turlock  
Hilmar  
Stevinson  
Gustine  
Ingomar  
Volta  
Trent  
Los Banos

Montpelier  
Ballico  
Livingston  
Stevinson  
Gustine  
Ingomar  
Volta  
Trent  
Los Banos

Delhi  
Livingston  
Stevinson  
Gustine  
Ingomar  
Volta  
Trent  
Los Banos

Hopeton  
The Grove  
Winton  
Atwater  
El Nido  
Brito  
South  
Dos Palos

Merced  
Bear Creek  
Planada  
Athlone  
El Nido  
Brito  
South  
Dos Palos

Merced Hills  
Hornitos  
Indian Gulch  
Catheys  
Le Grand  
Minturn  
Chowchilla  
Fairmead  
Dairyland

San Luis National Wildlife Refuge

Merced

Merced Hills  
Hornitos  
Indian Gulch  
Catheys  
Le Grand  
Minturn  
Chowchilla  
Fairmead  
Dairyland

Merced Hills  
Hornitos  
Indian Gulch  
Catheys  
Le Grand  
Minturn  
Chowchilla  
Fairmead  
Dairyland

Merced Hills  
Hornitos  
Indian Gulch  
Catheys  
Le Grand  
Minturn  
Chowchilla  
Fairmead  
Dairyland

Merced Hills  
Hornitos  
Indian Gulch  
Catheys  
Le Grand  
Minturn  
Chowchilla  
Fairmead  
Dairyland

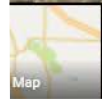
Merced Hills  
Hornitos  
Indian Gulch  
Catheys  
Le Grand  
Minturn  
Chowchilla  
Fairmead  
Dairyland

Merced Hills  
Hornitos  
Indian Gulch  
Catheys  
Le Grand  
Minturn  
Chowchilla  
Fairmead  
Dairyland

Merced Hills  
Hornitos  
Indian Gulch  
Catheys  
Le Grand  
Minturn  
Chowchilla  
Fairmead  
Dairyland

Merced Hills  
Hornitos  
Indian Gulch  
Catheys  
Le Grand  
Minturn  
Chowchilla  
Fairmead  
Dairyland

Merced Hills  
Hornitos  
Indian Gulch  
Catheys  
Le Grand  
Minturn  
Chowchilla  
Fairmead  
Dairyland



Google



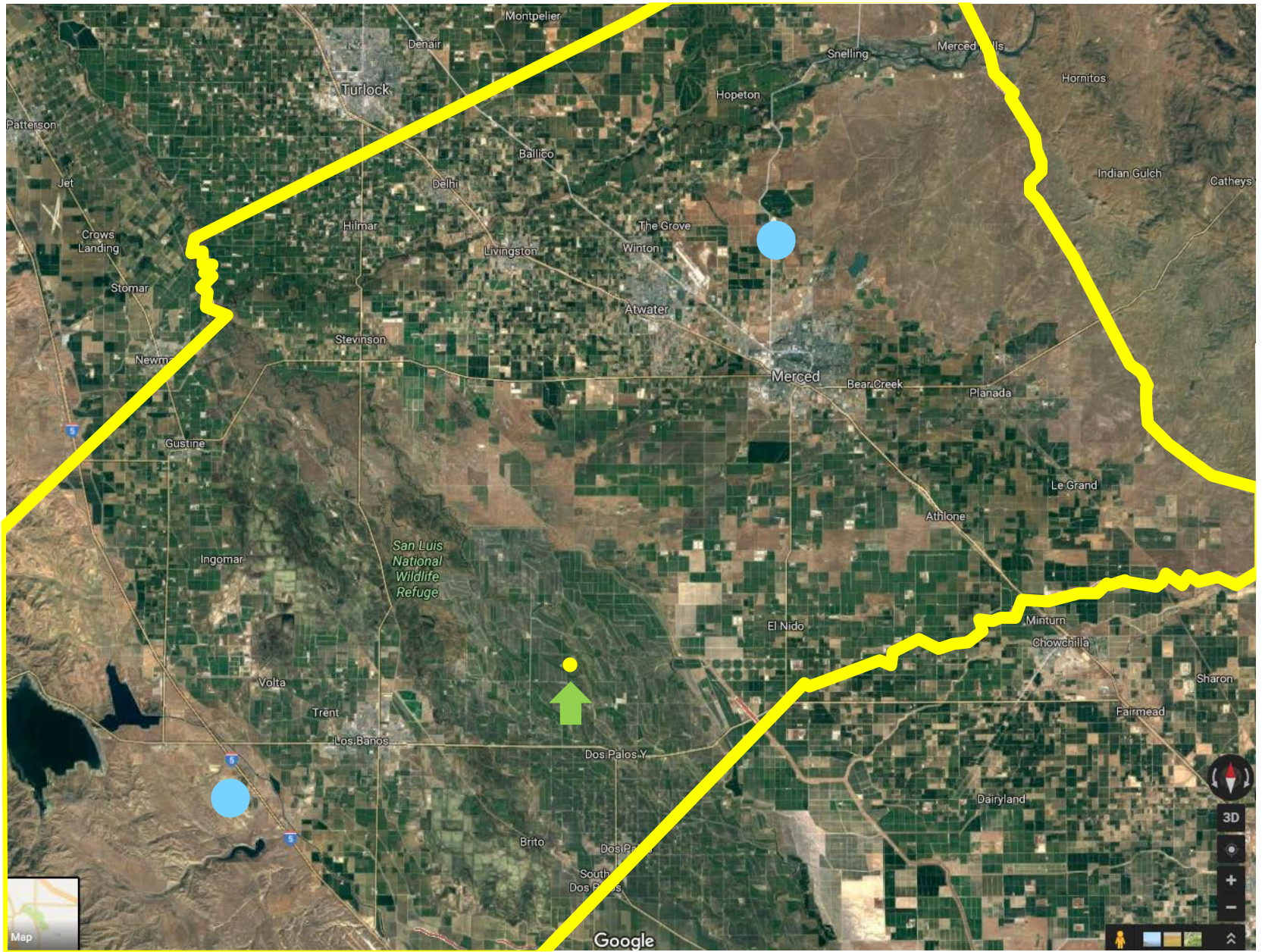
# Currently:



# Highway 59 Landfill Compost

2015: 3,839 cubic yards  
2016: 3,207 cubic yards







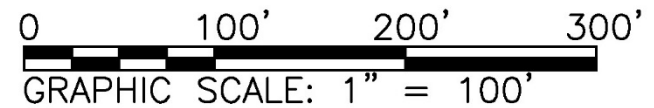
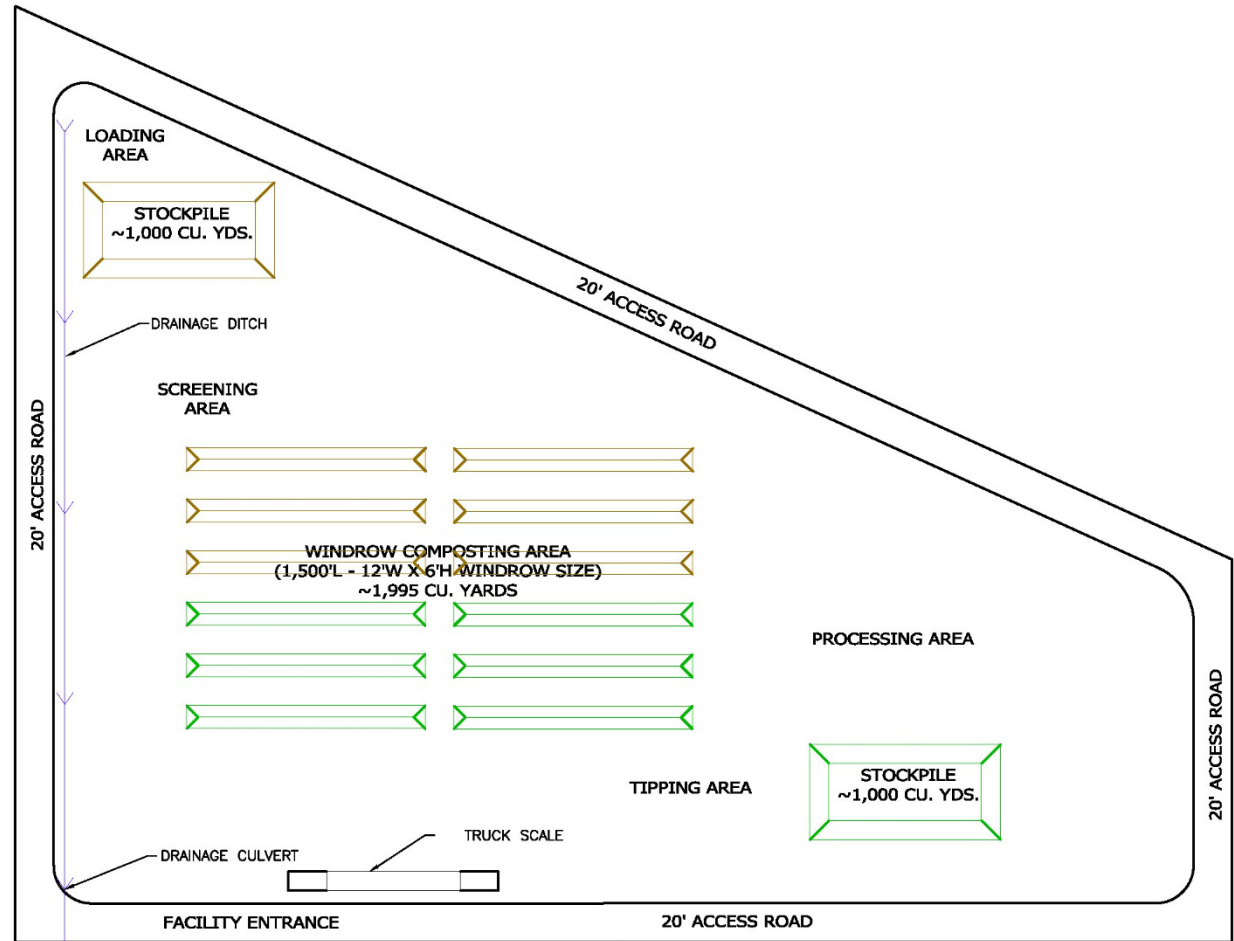
# BOWLES FARMING COMPANY

*Six Generations Of Farming California*

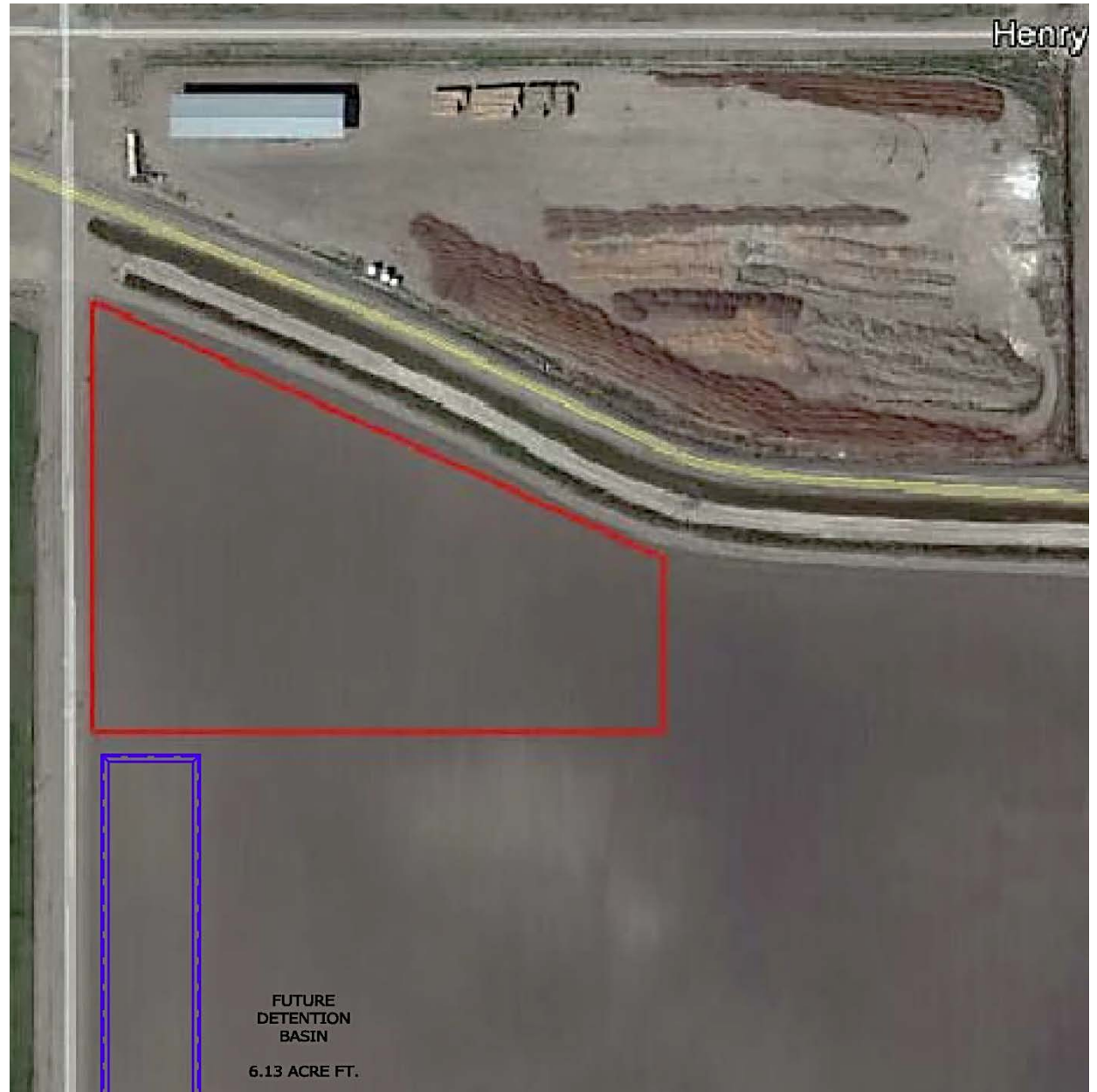
VIEW OUR FARM

[www.bfarm.com](http://www.bfarm.com)

# Bowles Farming Co.



# Bowles Farming Co.





# Closing the Loop: Back to Basics



Merced County  
Regional Zone  
Administrator

**Jennifer Halpin**  
(209) 723-4481 ext. 24  
jhalpin@mcrwma.org



- [www.mercedrecycles.com](http://www.mercedrecycles.com)
- [www.mcrwma.org](http://www.mcrwma.org)