

Tehama County REuse of Available Products (REAP)



Presented by:
Paul Freund
Recycling Coordinator II



NOVEMBER 2016


Rural Tehama County



What is REAP? How it works?

Attachment 4
TEHAMA COUNTY/RED BLUFF LANDFILL
HOUSEHOLD HAZARDOUS WASTE COLLECTION FACILITY
Reusable Material Acceptance Form

REAP Liability Waiver



By signing below, I waive, release and hold harmless the Tehama County Solid Waste Management Agency, Waste Connections Inc., PaintCare Inc., PaintCare Inc.'s sole member, and all of their agents, employees, member companies, officers, directors, successors, and assigns from any liability, claim, injury, losses, damages, or cause of action of any kind whatsoever, whether based on contract, tort, statute, common law, or strict liability, which are claimed in any way to result from, arise out of, or are connected with the handling, receipt, use, storage, treatment, disposal (including spilling and leaking) or release of reuse materials obtained through the PaintCare Program. For all materials that I obtain from the PaintCare Program, I accept with full understanding and appreciation of the actual or potential dangers stemming from the proper or improper use. I accept all risk related to my handling receipt, use, storage, treatment, disposal (including spilling and leaking) or release of such Program Product.

All materials that I obtain from the PaintCare Program, I accept as-is, with no warranties. I recognize that neither PaintCare nor the Drop-Off Site warrant that any materials obtained from the Drop-Off Site are merchantable or fit for any particular use. PaintCare and this Drop-Off Site are not responsible for any liability or damages stemming from the use of any material obtained from this Drop-Off Site.

analyzed by the Agency and I further understand that the Agency:

- Does not guarantee that the material inside the container(s) is what it appears to be, and makes no warranties or representations concerning the physical and chemical characteristics of the hazardous materials.
- Makes no warranties or representations concerning the proper handling, use, storage, or other management of the hazardous material, or concerning the risks to human health and safety or to the environment from misuse.

Upon taking these hazardous materials into my possession, I agree to do so at my sole risk and further agree to comply with all federal, state, and local laws and regulations pertaining to the transporting, storage, use, disposal and other management of these materials.

I further agree to indemnify and hold harmless the Tehama County/Red Bluff Landfill Management Agency, their officers, agents and employees from any and all liability, and any and all claims, demands, costs, damages, and expenses of any type whatsoever, which are in any manner connected with my acceptance, transportation, storage, use, disposal, or other management of this material.

Participant Signature _____	Date _____
Street Address _____	Telephone _____
City, State, Zip _____	Staff Signature _____

www.tehama.gov

- Redistributes products to public FREE
- Mobile REAP used for local events throughout County
- Permanent Facility located at Agency Office
- No waste accepted at REAP
- Quality Assurance Plan developed to ensure product acceptable for reuse
- Simple liability waiver (18 and over)

How it began...



Waste Diversion/Avoided Costs



- REAP supports 4Rs

Reduce

Reuse

Recycle

Rebuy

- Funding for HHW programs decline with decreasing landfill tonnage, volume of HHW increasing each year
- REAP shall trim program expenses

Outreach & Education are Key!



For more information contact the Tehama County Sanitary Landfill Agency at 528-1103

FREE PRODUCTS

Paints, stains, polishes, cleaning supplies, automotive fluids and more

WI
Red
Pro
Savi
Allo
unw
pro

WI
REAL
the
Dist
Thur:

Frida
Sund

No |

CO
The
Faci
Cou
Lan
nori

REAP THE BENEFITS OF REUSE

Mobile Reuse Pilot Program



To: <<Business Name>> Date: 10/16/12
<<Address>>
<<City, State Zip>>

Subject: Reduce Costs AND Comply with the California Green Building Code!

The Tehama County Sanitary Landfill Agency is pleased to announce REAP, a new reuse facility that serves to redistribute unwanted, yet usable materials to the public free of charge. REAP, which aptly stands for the REuse of Available Products, provides access to paints, stains, polishes, cleaning products, automotive fluids and much more. Consumers tend to over-purchase various products, leading to large volumes of leftover material that is expensive to manage and dispose of. Many of these materials are not in fact waste, but products in good condition that can easily be reused. Come see for yourself! The permanent REAP facility is located at the Tehama County/Red Bluff Landfill at 19995 Plymire Road in Red Bluff. Please call 528-1103 for hours of operation. The mobile REAP trailer is also present at events throughout Tehama County. Visit our Upcoming Events page at www.tehamacountylandfill.com to find out where the REAP trailer will be next.

Reuse programs, such as REAP, provides construction businesses with the opportunity to comply with the California Green Building Code by:

- Achieving material conservation and resource efficiency through the reuse of existing materials, and
- Reducing pollution through the recycling of materials.

In addition, utilizing REAP products reduces project costs! With free access to various products, the need to purchase paints, cleaners, etc. is avoided. All REAP products are in original containers with original labeling intact. A quality assurance program is in place to ensure that these products are fit for reuse. Product inventory fluctuates allowing various material types to be accessible. While we make efforts to ensure products are in their original container(s), please note, there is no guarantee the material inside the container matches the labeling of the container(s) or the shape of such container(s) and makes no warranties or representations concerning the physical and chemical characteristics of the hazardous materials. The REAP program does not accept



19995 PLYMIRE ROAD | RED BLUFF, CA 96080 | PH: 530.528.1103 | FAX: 530.528.9004
EMAIL: RECYCLE@CLARA.TYRENTY.COM

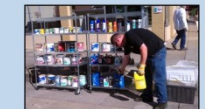
Tehama County



The REAP trailer transports unwanted, yet reusable material from the Tehama County/Red Bluff Landfill HHW facilities to public events for redistribution.



Products the public values the most include yard cleaning supplies, paints and yard/garden maintenance materials.



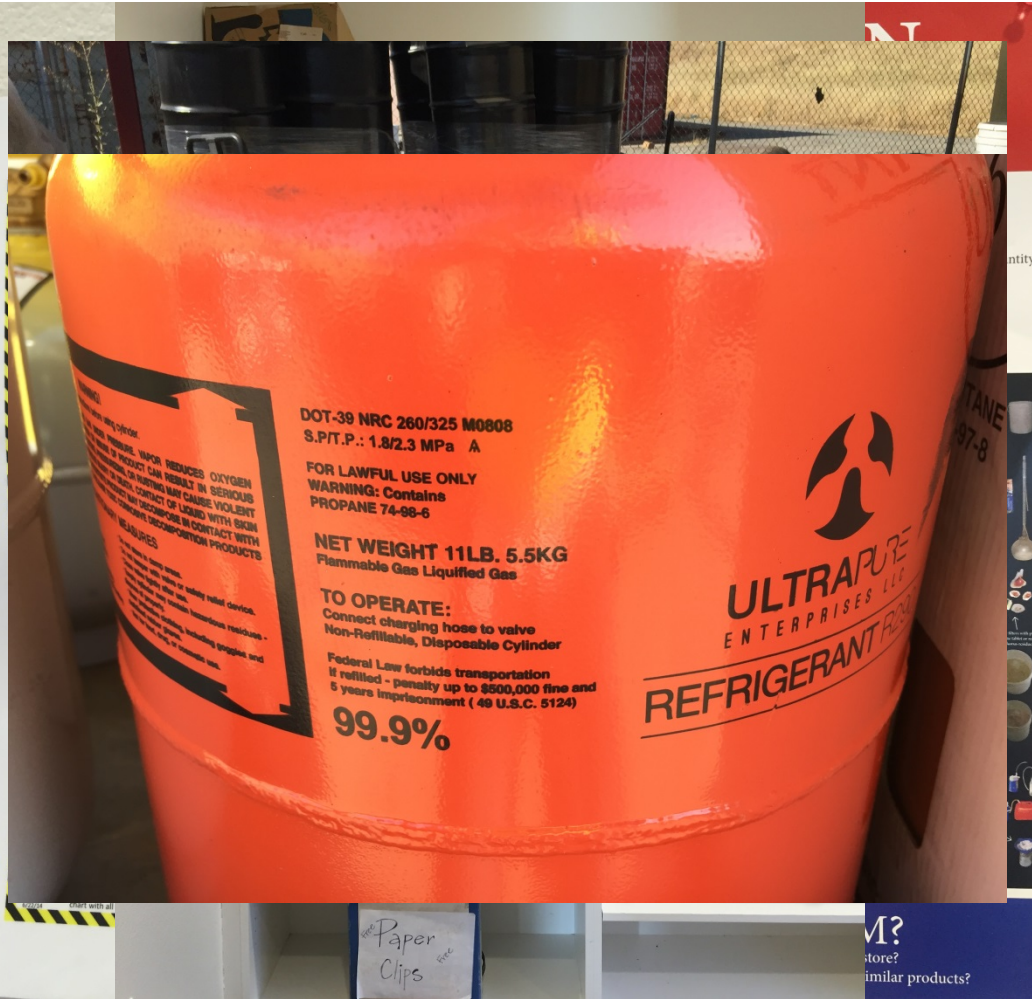
Shelving is rolled out of the trailer for material to be displayed at public events for free distribution.

Landfill Agency

l.com

| Tehama County REAP |

Lessons Learned



- Attend events based on need to get rid of material
- Increased participation at HHW facility
- Partnering with events to increase participation
- Positive recognition – People love it and support it!
- Beware of hoarders – set limits, list of banned users
- Always ensure lids are secure
- Have a spill kit!

- And, some things are still not fit for Reuse...

Recognition



- Received an award for Program Innovation at the 2013 North American Hazardous Materials Management Association (NAHMMMA) Conference



- Received a Certificate of Appreciation from Tehama County Drug and Alcohol Advisory Board for donating materials from REAP for their “Prevention Program Float”

Thank You!

Tehama County Solid Waste
Management Agency

Paul Freund

pfreund@co.tehama.ca.us

(530) 528-1103